

由于印刷原因，本画册所展示产品颜色实物可能出现偏差，请以实物产品为准。  
Due to the printing reasons,the color of the product displayed in this brochure may be differernt from the actual product,please refer to the actual product.

阿里巴巴文化 18626216913 / 品牌策划 / 数字 3D



赛福德医疗  
SAFETY MEDICAL



河南省赛福德医疗科技有限公司  
SAFETY MEDICAL TECHNOLOGY CO.,LTD  
地址：洛阳市伊滨区庞村镇政府东  
ADD: Pangcun Industrial Area,Luoyang,Henan,P.R.China 471000  
客户服务热线 / Customer service hotline  
中国 /China 400-6816-082

医疗家具整体解决方案提供商  
Medical furniture overall solution provider



公司官网



微信公众号



赛福德医疗  
SAFETY MEDICAL



医疗家具整体解决方案提供商  
Medical furniture overall solution provider

## 公司简介 Company Profile

河南省赛福德医疗科技有限公司，坐落于九朝古都，国花牡丹之乡—洛阳，历史文化底蕴浓厚，交通便利。公司总面积 50000 平方米，200 多名员工，产品已通过 ISO9001，ISO14001，ISO28001，ISO13485，CE 以及国际 BV 认证，是一家专业从事医疗器械的技术研发，技术咨询，技术服务以及产品的生产销售企业。

公司拥有一批专业性高科技的人才，先进的生产设备和完善的检测系统，靠诚信、品质、专业的经营理念、人文科学的管理、合理的价格及优秀的售后服务，使我们的产品畅销国内和国际市场，如北美，东南亚，中东等地区。

产品以护士站、治疗台、医疗用床和不锈钢器械为主，包括电动病床，手动病床，自动翻身床，医用护理车，不锈钢医疗器械柜，病历车，床头柜以及配套设备等，使用范围包括医院，福利院，及家庭看护等。

赛福德人真诚期待与国内及全世界各地的朋友建立长期的业务关系，欢迎 OEM 和 ODM 订单，同时欢迎世界各地的朋友来我公司参观考察，我们相互合作，共同发展。

Safety Medical Technology Co., LTD is located in Luoyang, who is ancient capital of nine dynasties, and hometown for national flower peony, with an abundance of historical and cultural heritage, as well as convenient transportation. The factory has a total area of 50000 and more than 200 employees, our products have passed ISO9001, ISO14001, ISO28001, ISO13485, CE and international BV certifications, SAFETY is an enterprise specialized in technology R&D, technical consulting, technical services, as well as production and sales for medical apparatus and instruments.

Our company has a number of professional high-tech talents, advanced production equipment and perfect testing system. Relying on integrity, quality, professional management philosophy, humanistic management, reasonable prices and excellent after-sales service, our products sold at home and abroad, as North America, Southeast Asia, Middle East, etc...

The main products are medical beds and stainless steel equipment, including electric hospital bed, manual bed, automatic turning bed, medical nursing cart, stainless steel medical equipment cabinet, medical record cart, bedside table and ancillary equipments, etc...The usable range include hospital, welfare home, home assistance and so on.

SAFETY family looking forward to establishing long-term business relationship with both domestic and overseas customers, OEM and ODM orders are welcome, as well as friends from all over the world to our factory, we are pursuing mutual cooperation and coomon development.



# 科技智能

## Technological intelligence

作为全球领先的医用设施智造品牌，赛福德医疗始终秉承人文、环保、洁净、耐用、高效的设计理念，致力将医用设施产品与未来智能化相结合的智慧产品，实现人、科技、环境的和谐统一，体现亲切感与人文关怀，营造舒适、富有鲜明个性的智慧型医用空间环境，为现代医疗机构提供一站式整体解决方案。

As the world's leading intelligent manufacturing brand of medical facilities, SAFETY medical always adheres to the design concept of humanity, environmental protection, cleanliness, durability and efficiency, and is committed to combining medical facilities products with intelligent products in the future, so as to realize the harmonious unity of human, science and technology and environment, and realize the cordiality and humanistic care, Create a comfortable, distinctive personality of intelligent medical space environment, for modern medical institutions to provide a one-stop overall solution.







# 研发智造 R & D intelligent manufacturing

舒适的空间、高端的医用家具、智能智造，是我们赛福德的核心使命，未来，凭借着前端的设计理念、先进的生产设备及丰富的医疗配套技术经验，不懈努力地发展、创新。为全国各医疗机构提供高端医疗设施产品，努力打造舒适、富有鲜明个性的智慧性医用空间环境为己任，让健康和爱回归美好。

Comfortable space, high-end medical furniture and intelligent manufacturing are our core mission. In the future, relying on the front-end design concept, advanced production equipment and rich experience in medical supporting technology, we will make unremitting efforts to develop and innovate. It is our duty to provide high-end medical facilities and products for medical institutions in China, and strive to create a comfortable and intelligent medical space environment with distinctive personality, so as to make health and love return to the beautiful.

公司拥有一批专业性高科技的技术人才，先进的生产设备和完善的检测系统。靠诚信、品质、专业的经营理念，人文的科学管理、完善的售后服务使产品畅销国内及国际市场。我们以技术为驱动，以创新为本，让中国智能制造的医养家具走向世界。

Our company has a number of professional high-tech technical personnel, advanced production equipment and perfect detection system. Relying on integrity, quality, professional business philosophy, humanistic scientific management, perfect after-sales service, the products sell well in domestic and international markets. Driven by technology and based on innovation, we make China's intelligent medical and nursing furniture go to the world.



## 设计理念

专业技术设计团队，智能化的设计理念，设计富有现代化智能化产品，突显医院的人性化和温馨感。

Professional technical design team, intelligent design concept, design of modern intelligent products, highlighting the humanization and warmth of the hospital.



## 智能制造

公司生产线完善，先进的生产设备，致力打造智能医养家具，从材质到工艺，每件都精工打造，赛福德追求“工匠精神、精益求精”，力求成为行业标杆。

With perfect production line and advanced production equipment, the company is committed to creating intelligent medical furniture, from material to technology, each piece is elaborately made. We pursue "craftsmanship spirit, excellence", and strive to become the industry benchmark.



## 服务保障

公司拥有完善的服务体系，可为客户提供全方位的售前、售中、售后服务。

Our company has a perfect service system, can provide customers with a full range of pre-sale, sales, after-sales service.



## 安全环保

Safety and environmental protection

### 1. 污染区不洁净区分割设计

从功能划分设计上考虑洁、污物品的层次分类，强调防止交叉感染，从根本上为用户提供安全清洁的使用环境。

### 2. 治疗类家具边角圆角处理

家具的传统直角进行圆角处理可以减少不必要的意外伤害，扶手端头的曲面处理符合人轻扶时的手心曲线，靠背也会做成和人体脊髓相似的曲线。这些虽然看起来和圆角化没有很大关系，但更像是圆角空间化的延伸，功能上也是为了缓冲人体接触，大大提升安全性。

1. The segmentation design of contaminated area and unclean area take the hierarchical classification of clean and dirty items from functional division into consideration, emphasizing the prevention of cross-infection, providing users with safe and clean environment fundamentally.

### 2. Round corner treatment of therapeutic furniture

The round corner treatment for traditional furniture can reduce unnecessary accidental injury, the curved surface treatment of handrail ends in accord with palm curve when a person holding lightly, and the backrest will be made into similar curve with human spine. These are extension of round corner spatialization, to cushion human contact and enhance safety.

选用高标准环保材质，确保产品绿色环保。  
Use high-standard environmental protection material to ensure the green product.

- 选用电解钢板材质，无需酸洗磷化处理。
- 可回收利用，低消耗，无污染。
- 减少使用木质材料，欧标 E0 级人造板。
- Use high-standard environmental protection material to ensure the green product. Use electrolytic steel plate material, no need for pickling and phosphating treatment.
- Recyclable, low consumption and non-pollution.
- Reduce the use of wood material, European standard E0 grade artificial board.

建设安心舒适的现代医院，创建和谐便利的医患交流空间。

Build safe and comfortable modern hospital, create harmonious and convenient space for doctor-patient communication.



## 以人为本

People Oriented

### 1. 家具设计符合人体工程学

医院家具必须要满足人性化的要求，人性化要求的第一步是要进行人体工学，设计须便于医生、患者使用。医院家具的人性化必须要符合医生和患者的使用需求。譬如护士站的边台设计要根据中国女性的平均身高来设计；出诊医生的座椅设计也必须考虑人体工学设计，座椅高度可以上下调节，坐面可以实现前后的调节，座椅靠背和坐面材料要具有较好的透气性等；柜类高度便于拿取。

### 2. 无障碍设计、圆边圆角处理

医院家具无障碍设计关注和重视残疾人、老年人等弱势群体的特殊需求，并非专为满足使用者的心理需求，还要为用户提供最大可能的方便。

### 1. Furniture design conforms to ergonomics

Hospital furniture must meet the requirements of humanization, to achieve this, the first step is to ensure the design will be easy for doctors and patients to use. For example, the side table design of nursing station should be based on average height of Chinese women; The seat design of doctor must consider the ergonomics, the seat height can be adjusted up and down, the seat surface can be adjusted back and forth, the material of seat back and surface with better permeability; The cabinet height can be easy to take.

### 2. Barrier-free design, round edge and round corner

The barrier-free design of hospital furniture pays attention to special requirements of vulnerable groups, as the disabled and the elderly, not just to meet their psychological needs, also want to provide users with the highest possible convenience.







## > Create a comfortable medical space

### 创造舒适医用空间

现代的医院空间环境要素中需要功能性的医用家具，针对医院的环境，赛福德公司根据先进的设计理念，研究各医院科室的特殊性，在环境设计方面突出安全、便捷、人文和绿色，医疗家具可通过划分、界定丰富整个医院的室内空间，无论从医院空间的环境设计及医疗家具的设计，成功的设计在于相辅相成，由点及面的互相呼应。

Modern hospital space environment elements need functional medical furniture. In view of the hospital environment, according to the advanced design concept, SAFETY Medical studies the particularity of each hospital department, and highlights safety, convenience, humanity and green in environmental design. Medical furniture can enrich the interior space of the whole hospital through division and definition, and can not follow the environmental design and management of hospital space In the design of medical furniture, the successful design lies in complementing each other and echoing each other from point to surface.



# CATALOG

## 目录



### 01

PR Area  
公共区间

导医台 / 护士站	014-031
Medical Guide Station/ Nurse Station	
输液区	032-035
Infusion Area	
公共休息区	036-037
Public Rest Area	

### 02

Nursing Area  
护理区间

处置室 / 治疗室	040-047
Disposal Room/ Treatment Room	
实验室	048-051
laboratory	
更衣室	052-053
Locker Room	
污洗室	054-055
Dirty Room	
过渡车 / 抢救车 / 担架车系列	056
Stretcher/ Transportation Trolley Series	
医用不锈钢池 / 台 / 柜系列	057
Medical Stainless Steel Pool/Table/Series	
防爆柜 / 通风柜系列	058-059
Explosion-proof cabinet/fume hood series	
医用推车系列	060-061
Medical Trolley Series	

### 03

Diagnosis and Treatment Area  
诊疗区间

诊疗室	064-069
Clinic	
妇科诊室	070-071
Gynecology Clinic	
诊断床 / 诊查床系列	072
Diagnostic Bed Series	
陪护椅 / 输液椅 / 医用凳系列	073
Accompany Chair	
/ Transfusion Chair/ Medical Stool Series	
婴儿床 / 妇检床系列	074
Infant Bed	
/ Gynecological Examination Bed Series	
文件柜系列	075
Filing Cabinet Series	

### 04

Pharmacy, Warehouse  
药房 / 库房

西药房	078-081
Pharmacy	
中药房	082-083
TCM Pharmacy	
柜体系列	084-085
Cabinet Series	
药架系列	086-087
Medicine Rack Series	
西药柜系列	088
Western Medicine Cabinet Series	
中药柜系列	089
Chinese Medicine Cabinet Series	

### 05

Inpatient Department  
住院部

普通病房	092-095
General Ward	
VIP 病房	096-097
VIP Ward	
儿童病房	098-099
The Children's Ward	
中式病房	100-101
Chinese Ward	
多功能护理床系列	102-107
Multifunctional Hospital Bed Series	
家庭护理床系列	108-109
Home Care Bed Series	
儿童床系列	110
Children Bed Series	
骨科牵引床系列	111
Orthopedic Bed Series	
医用床头柜系列	112
Medical Bedside Cabinet Series	
配件	113
Parts	



## PART01

医疗家具整体解决方案提供商  
Medical furniture overall solution provider

### 公共区间 PR section

导医台  
Medical Guide Station  
护士站  
Nurse Station  
输液区  
Infusion Area  
公共休息区  
Public Sitting Area





## > Medical Guide Station

### 导医台

医院导医台是体现医院或者医疗机构形象和档次的门户所在，要达到亲切优雅的概念，导医台设计不仅展示一个医院的实力，又起到人际交往、商业礼仪、形象战略等诸多方面的重要作用，而医患之间的第一印象就从导医台开始。

凹凸设计，方便轮椅进入，贴近接待台，方便填单、沟通交流，拉近双方距离，融洽又和谐。

The hospital guide station is the gateway to reflect the image and grade of a hospital or medical institution.

To achieve the concept of cordiality and elegance, the design of medical guide platform not only shows the strength of a hospital.

It also plays an important role in interpersonal communication, business etiquette and image strategy.

And the first impression between doctors and patients starts from the guide Station.

Concave convex design, convenient wheelchair access, close to the reception desk, convenient to fill in the form

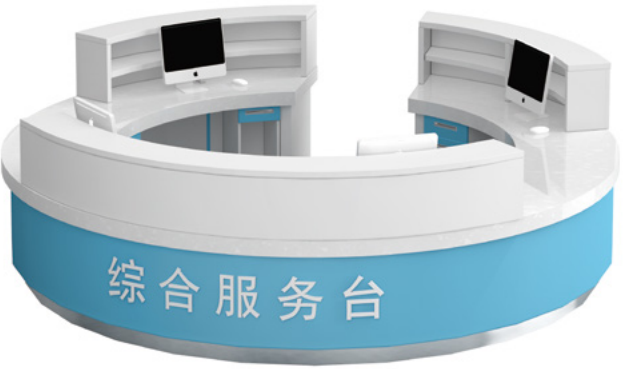
Communication and communication can shorten the distance between the two sides, which is harmonious and harmonious.







> **Medical Guide Station**  
导医台



推荐可选颜色  
Recommended colors



设计说明：

导医台的设计需满足以下五大主要功能对使用的需求：

- 一、医患沟通平台 病患接待、接受问询、就医指引、流程说明、注意事项。
- 二、病患就医平台 协助年老体弱者病人挂号、送诊。
- 三、医护工作平台 资料归类存放、信息化工作站。
- 四、健康宣传平台 健康知识、诊疗常规、药物手册、检验手册、医学信息。
- 五、形象展示平台 整个医院环境协调统一，又富于变化。

Design Description:

The design of the medical guide platform should meet the following five main functions for use:

- 1、 Doctor patient communication platform: patient reception, consultation, medical guidance, process description and precautions.
- 2、 The patient consultation platform helps the elderly and weak patients to register and send for treatment. A kind of
- 3、 Medical work platform data classified storage, information workstation.
- 4、 Health information platform health knowledge, diagnosis and treatment routine, drug manual, test manual, medical information.
- 5、 The image display platform and the whole hospital environment are coordinated and unified, and rich in changes.



## > Nurse Station

护士站

护士站 Nurse Station

护士站不仅显示一个医院的实力，  
起到人际交往、商业礼仪、  
形象战略等诸多方面的重要作用，  
而医患之间的第一印象就从护士站开始。

The nurse station not only shows the strength of a hospital, but also plays  
an important role in interpersonal communication, business etiquette,  
image warfare, etc., and the first impression between doctors and  
patients starts from the nurse station.



> **Nurse Station**

护士站



随着社会的不断发展，医院医疗机构的不断进步，人们对医院环境医院空间的要求也是越来越高，在这种形势下，护士站和导医台也逐渐在医院综合装修中脱离出来，成为医院软包装的重要的一环。现代的护士站和导医台通过专业化的设计和工业化流水线的生产，使得医院空间得到了质的飞跃，其医院的形象，量身定做护士站是必不可少的。

护士站的功能特殊繁多，其不仅需要承担接待患者、问询患者、分流患者、患者填单的功能，其还是医护人员主要的工作休息的区域，所以在护士站的功能性设计方面，

将医院的内部环境和医院整体的色彩风格相结合。

With the continuous development of society and the continuous progress of hospital medical institutions, people's requirements for hospital environment and hospital space are also higher and higher.

In this situation, the nurse station and medical guide station are gradually separated from the hospital comprehensive decoration, and become an important part of the hospital soft packaging.

Modern nurse station and medical guide station have made a qualitative leap in hospital space through professional design and industrialized production line. It is necessary to tailor the image of the hospital.

The functions of the nurse station are special and various, which not only need to undertake the functions of receiving patients, inquiring patients, diverting patients and filling in forms, but also the main work and rest area of hospital staff.

Therefore, in the functional design of the nurse station, the internal environment of the hospital and the overall color style of the hospital are combined.







> **Nurse Station**  
护士站



新颖的现代曲线设计，适用于医院门诊大厅、护士站。

如医院大厅中央服务台、咨询台。

The novel modern curve design is suitable for hospital outpatient hall and nurse station.

Such as the central service desk in the hospital hall and the information desk.

**设计说明：**

医院护士站不仅承担病患接待、问询、分流填单等功能，

还是医护人员主要的工作空间，护士站的功能设计跟医院内部环境相结合。

通过提供医用家具的设计、生产、安装等一站式的服务给患者及医务人员营造一个温馨舒适的环境。

大厅护士站结合我国传统中医文化，以人为本，精选木纹饰面，

让空间更加清新自然，显得沉稳、大气、简洁、富有人文气息。

**Design Description:**

The hospital nurse station not only undertakes the functions of patient reception, inquiry, triage and filling in forms,

It is also the main working space for medical staff. The functional design of nurse station is combined with the internal environment of the hospital.

By providing one-stop service such as design, production and installation of medical furniture, a warm and comfortable environment is created for patients and medical staff.

The nurse station in the hall combines the traditional Chinese medicine culture of our country, takes people as the center, selects the wood to compare the veneer,

Let the space more fresh and natural, appear calm, atmospheric, concise, full of humanistic flavor.



> Maternal And Child  
Nurse Station

妇幼护士站







## > Maternal And Child Nurse Station

### 妇幼护士站

妇幼医院主要是服务孕产妇、儿童和妇女，在妇幼医院护士站设计定制时，不仅要确保该医疗家具的使用功能，还要注重环境色彩塑造和氛围的营造，而导诊台、护士站等家具的色彩搭配，作为妇幼医院设计中的一项重点内容，也越来越受到大家的重视。

色彩对患者、陪护者、医护人员都有着重要的意义，是现代妇幼医院设计的一个重要元素。通过不同的色彩搭配来区分各个功能区域，给人带来不同的就医体验。

Maternal and child hospital is mainly to serve pregnant women, children and women. When designing and customizing the nurse station in MCH, we should not only ensure the use function of the medical furniture, but also pay attention to the environmental color shaping and atmosphere building. As a key content in the design of MCH, the color matching of furniture such as guide desk and nurse station has been paid more and more attention.

Color is of great significance to patients, caregivers and medical staff. It is an important element of modern maternal and child hospital design. Through different color matching to distinguish each functional area, bring different medical experience.





> **TCM Nurse Station**  
中医护士站



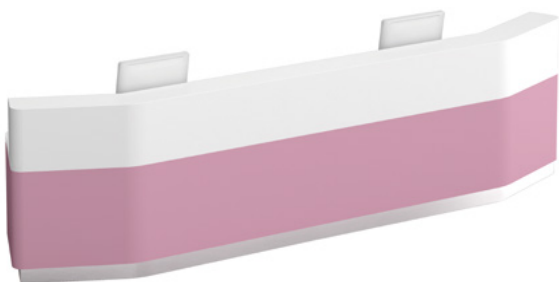
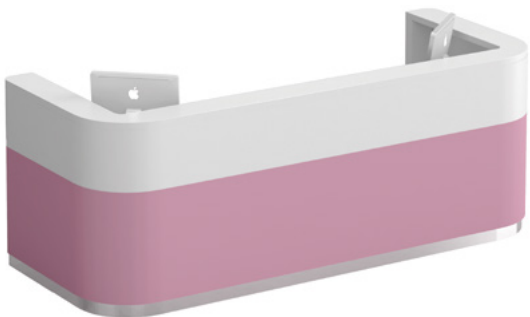
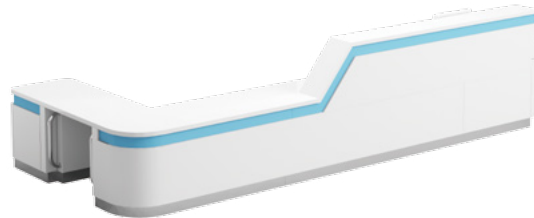
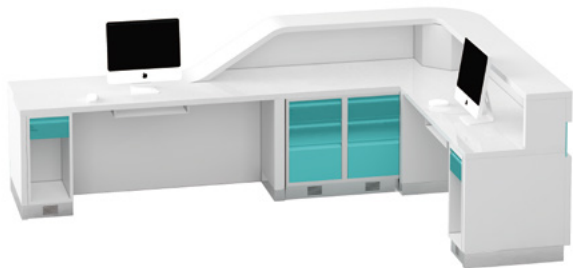
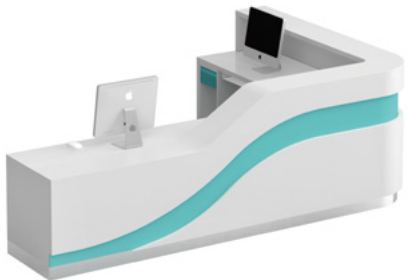
我们在护士站的设计，既追求功能上的完善，也充分满足医护人员高效、便捷、环保、舒适、安全的要求，更融入了行业领先的“智慧医疗”系统的设计理念。

The design of our nurse station not only pursues the perfection of functions, but also fully meets the requirements of medical staff for high efficiency, convenience, environmental protection, comfort and safety, but also integrates the design concept of the industry-leading Intelligent Medical system.





> **Nurse Station Series**  
护士站系列







> Infusion Area  
输液区

随着诊疗生活水平的不断提高医院座椅也逐渐由简单乘坐需求的座椅，朝向多功能、舒适、安全、环保等方向发展，让患者无论是生理还是心理都能得到更好的照顾。

With the continuous improvement of the living standard of diagnosis and treatment, hospital seats are gradually developed from simple seats to multifunctional, comfortable, safe and environmental protection, so that patients can get better care both physically and psychologically.



> **Infusion Area For Children**

儿童输液区



输液单元是用于急诊、门诊输液的治疗单元，实际设计时可多单元套用，需与皮试肌注室、护士站、输液配剂室临近。儿科输液的产品设计尤为重要，考虑到患者的身份特殊性，针对产品的颜色搭配及人性化设计更加注重小朋友的体验，缓解小朋友检查时的害怕心理。设计时需注意座椅间距，基本满足治疗车通过、护士静脉注射等操作所需空间。

Infusion unit is a treatment unit for emergency and outpatient transfusion. It can be used in multiple units in actual design, and it should be close to skin test and intramuscular injection room, nurse station and infusion preparation room. The product design of pediatric infusion is particularly important. Considering the special identity of patients, the color matching and humanized design of the products pay more attention to the children's experience, so as to alleviate the children's fear during the examination. The design should pay attention to the distance between the seats, which can basically meet the space required for the operation of the treatment vehicle passing through and intravenous injection of nurses.





> **Public Rest Area**  
公共休息区



随着诊疗生活水平的不断提高医院座椅也逐渐由简单乘坐需求的座椅，朝向多功能、舒适、安全、环保等方向发展，让患者无论是生理还是心理都能得到更好的照顾。

With the continuous improvement of the living standard of diagnosis and treatment, hospital seats are gradually developed from simple seats to multifunctional, comfortable, safe and environmental protection, so that patients can get better care both physically and psychologically.





## PART02

医疗家具整体解决方案提供商  
Medical furniture overall solution provider

# 护理区间 Nursing interval

处置室 / 治疗室

Disposal Room/ Treatment Room

实验室

laboratory

更衣室

Locker Room

污洗室

Dirty Room

过渡车 / 抢救车 / 担架车系列

Stretcher/ Transportation Trolley Series

医用不锈钢池 / 台 / 柜系列

Medical Stainless Steel Pool/Table/Series

防爆柜 / 通风柜系列

Explosion-proof cabinet/fume hood series

医用推车系列

Medical Trolley Series





> **Treatment Room**  
治疗室

有效提高医院的服务和运作质量  
Effectively improve the service and operation quality of the hospital





> **Treatment Room**

治疗室



设计说明:

柜体采用电解钢板，台面采用医疗专用复合亚克力制作，易清洁、抗污垢、耐冲击、耐高温以及具有阻燃性，无毒无辐射性，符合医院等高标准的环境卫生要求。

根据医院特定的空间，吸取现代化医院的设计元素，依着经济与实用性的设计概念，根据不同的患者人群，营造：一个方便、安静、祥和、清新淡雅、温馨的新医环境。

优秀的团队，造就优秀的产品，造型简练、比例匀称。结构严谨、做工精细。多层面、多层次、多元化的整体规划，以及搭配恰当的色彩和实用的功能，从内而外给人一种与众不同的感觉。

台面有人造石、不锈钢和理化板等材质，根据用户要求可任意选择。

Design Description:

The cabinet body is made of Electrolytic steel plate, and the table top is made of medical special composite acrylic. It is easy to clean, dirt resistant, impact resistant, high-temperature resistant, flame retardant, non-toxic and non-toxic, which meets the requirements of high-level environmental sanitation such as hospitals.

The hospital should be designed according to the new concept of quiet, convenient and convenient for patients.

Excellent team, create excellent products, concise modeling, proportional. It has strict structure and fine workmanship. The multi-level and diversified overall planning, as well as the matching of appropriate colors and practical functions, give people a different feeling from the inside out.

The table top has three materials: artificial stone, stainless steel and physical and chemical board, which can be selected at will according to user requirements.



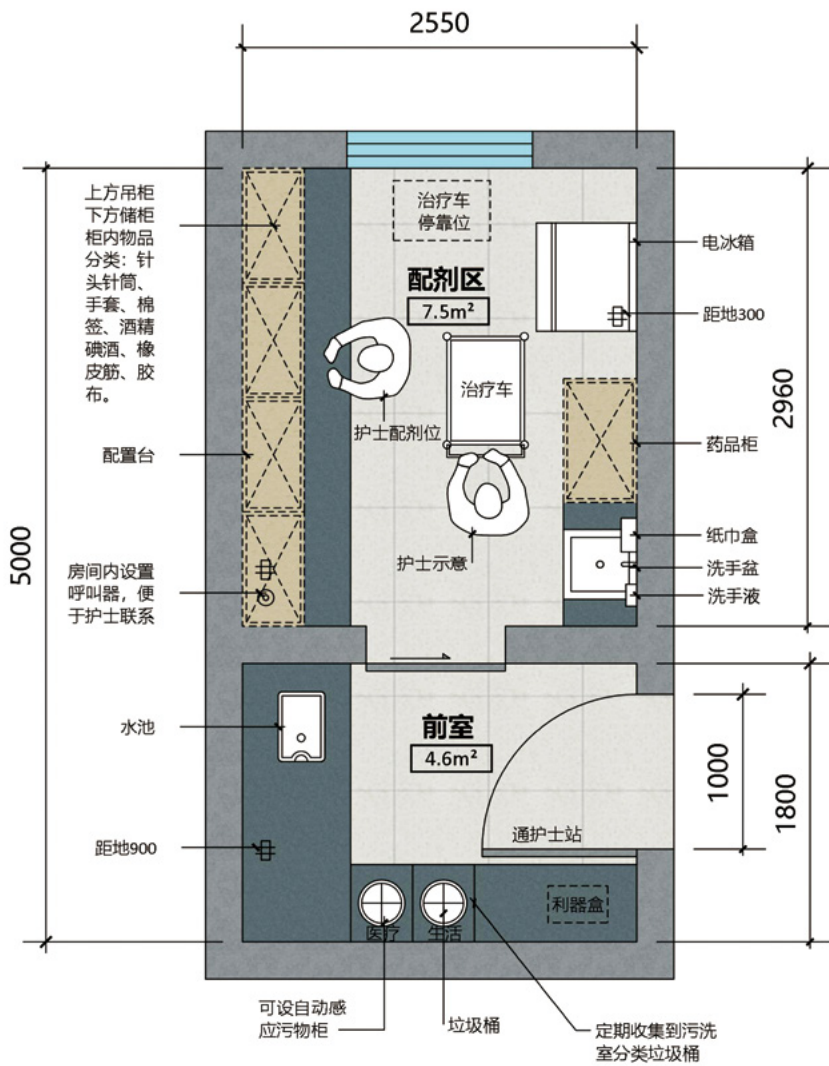
> Disposal Room

处置室



治疗柜主要用于医院的配药室、治疗室、处置室等。从功能划分设计上就考虑了洁、污物品的层次分类，强调防止交叉感染，从根本上为用户提供安全清洁的使用环境。在设计上，充分挖掘了吊柜的空间利用率，使其能放入更多药物，提高药物的储存率和使用率。并且医用吊柜内部有不同的间隔功能，防止药物等物品交叉感染，保持安全清洁的环境。

The treatment cabinet is mainly used in the dispensing room, treatment room, disposal room, etc. of the hospital. In terms of functional division design, the hierarchical classification of clean and dirty items is considered, emphasizing the prevention of cross-infection, and fundamentally providing users with a safe and clean environment. In terms of design, the space utilization rate of the hanging cabinet is fully exploited, so that more medicines can be put in, and the storage rate and utilization rate of medicines are improved. Moreover, there are different partition functions inside the medical wall cabinet to prevent cross-infection of drugs and other items and maintain a safe and clean environment.





> **Disposal Room**  
处置室



> **Treatment Room**  
治疗室

治疗室、处置室用于医疗处置操作，如：换药、消炎、包扎等。  
患者自己或在其他人帮助下进入治疗室。  
医生与护士共同进行工作，根据需要对患者坐位、卧位或取特殊体位。

The treatment room and disposal room are used for medical treatment, such as dressing change, anti-inflammatory, dressing, etc.  
The patient enters the treatment room himself or with the help of others.  
Doctors or nurses work together to make patients sit, lie or take special positions according to their needs.





## > Laboratory

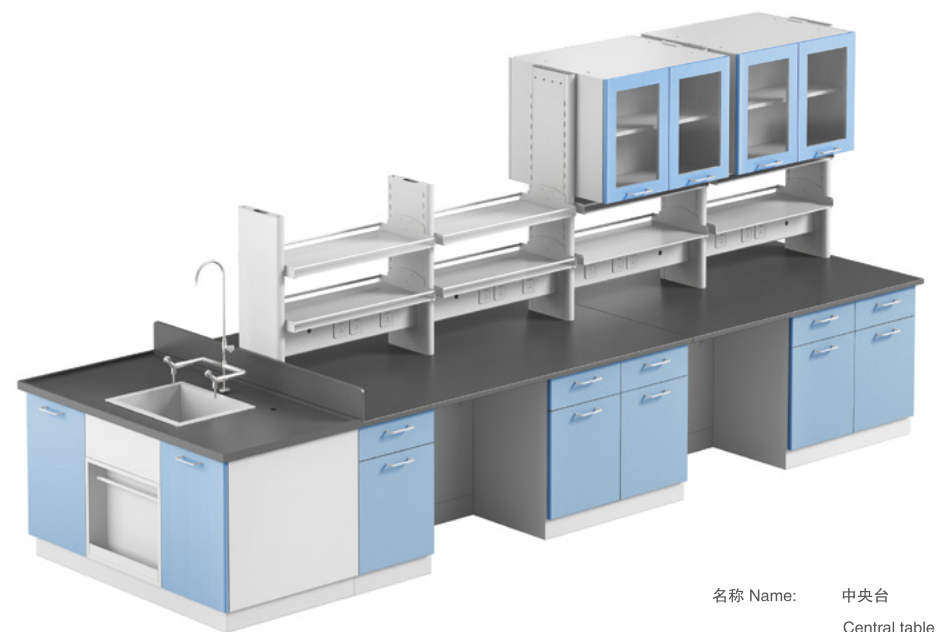
### 实验室

实验室实验台具有结构合理、外形美观、操作简单、安全可靠等特点，确保了实验人员的安全健康，也保障了实验室的舒适环保。实验台是实验室必不可少的实验装备之一。

The laboratory bench has the characteristics of reasonable structure, beautiful appearance, simple operation, safety and reliability, which ensures the safety and health of the experimenters and the comfort and environmental protection of the laboratory. The laboratory bench is one of the indispensable experimental equipment in the laboratory.







名称 Name: 中央台  
Central table



名称 Name: 边台  
Side table



> **Locker Room**  
更衣室

柜面采用绿色环保型粉末，高温塑化而成，防腐性好，色彩柔和，无异味，简洁大气。

The cabinet surface is made of environmentally friendly powder, plasticized at high temperature, with good corrosion resistance and soft color.No peculiar smell, simple atmosphere.









> **Stretcher & Transportation Trolley Series**

过渡车、抢救车、担架车系列



型号 Model: **SFD-P01**  
名称 Name: 豪华手术对接车  
Delux Operational Connecting Stretcher  
规格 Dimension: W3600\*D610\*H550-850mm  
△ 背部床板采用气弹簧装置辅助调节角度 0-60°  
△ 手动摇杆控制升降调节高度  
△ 主体优质碳素结构钢制作，抗菌静电粉末喷涂  
△ 床面、护栏采用优质塑料一次成型、坚实美观  
△ Back bed board adopts gas spring device to assist adjustment angle:0-60°  
△ Adjust the height by the mechanical crank system  
△ Anti-rust electronstation sprayed surface  
△ The bed surface and guardrail are made of high-quality plastic,solid and beautiful



型号 Model: **SFD-N01A**  
名称 Name: 转运车  
Medical Stretcher  
规格 Dimension: W1930\*D650\*H520-820mm  
△ 背部床板采用气弹簧装置辅助调节角度 0-60°  
△ 手动摇杆控制升降调节高度  
△ 主体优质碳素结构钢制作，抗菌静电粉末喷涂  
△ Back bed board adopts gas spring device to assist adjustment angle:0-60°  
△ Adjust the height by the mechanical crank system  
△ Anti-rust electronstation sprayed surface



型号 Model: **SFD-M01**  
名称 Name: 全不锈钢两大轮担架车  
Stainless Steel Stretcher With Two Big Wheeled  
规格 Dimension: W2000\*D710\*H720mm  
△ 上部床面可单独作担架使用  
△ 主体优质不锈钢制作  
△ 两导向大轮、两 125mm 静音万向脚轮、移动灵活、制动可靠  
△ 可选配床垫、点滴架  
△ Bed board can be used as an separate stretcher  
△ High quality stainless steel as main structure  
△ 2 big wheels, 2 small 125mm dia. Wheels,stable and reliable.  
△ Optional accessory:Mattress, IV stand



型号 Model: **SFD-M02**  
名称 Name: 担架车  
Stainless Steel Stretcher  
规格 Dimension: W2000\*D650\*H680mm  
△ 上部床面可单独作担架使用  
△ 主体优质不锈钢制作  
△ 四个 125mm 静音万向静音轮对角刹车、移动灵活、制动可靠  
△ 可选配床垫、点滴架  
△ Bed board can be used as an separate stretcher  
△ High quality stainless steel as main structure  
△ 4 small 125mm dia. Wheels,stable and reliable.  
△ Optional accessory:Mattress, IV stand

> **Medical Stainless Steel Pool & Table & Cabinet Series**

医用不锈钢池、台、柜系列



型号 Model: **SFD-850**  
名称 Name: 器械柜  
Instrument Cabinet  
规格 Dimension: W900\*D400\*H1800mm  
△ 主体优质不锈钢制作  
△ Stainless steel as main structure



型号 Model: **SFD-851A**  
名称 Name: 器械柜  
Instrument Cabinet  
规格 Dimension: W900\*D400\*H1800mm  
△ 主体优质不锈钢制作  
△ Stainless steel as main structure



型号 Model: **SFD-851B**  
名称 Name: 器械柜  
Instrument Cabinet  
规格 Dimension: W900\*D400\*H1800mm  
△ 主体优质不锈钢制作  
△ Stainless steel as main structure



型号 Model: **SFD-852**  
名称 Name: 器械柜  
Instrument Cabinet  
规格 Dimension: W900\*D400\*H1800mm  
△ 主体优质不锈钢制作  
△ Stainless steel as main structure



型号 Model: **SFD-881**  
名称 Name: 治疗柜  
Treatment Cabinet  
规格 Dimension: W900\*D400/250\*H1800mm  
△ 主体优质不锈钢制作  
△ Stainless steel as main structure



型号 Model: **SFD-901B**  
名称 Name: 储物柜  
Storage Cabinet  
规格 Dimension: W900\*D500\*H2000mm



型号 Model: **SFD-910**  
名称 Name: 感应洗手池  
induction sink  
规格 Dimension: W1800\*D700\*H1100-800mm  
△ 三人位、优质不锈钢制作  
△ 3 persom position,Stainless steel as main structure



型号 Model: **SFD-910A**  
名称 Name: 自动感应洗手池  
Auto Induction Sink  
规格 Dimension: W1650\*D700\*H1100-800mm  
△ 二人位、优质不锈钢制作  
△ 2 persom position,Stainless steel as main structure



型号 Model: **SFD-883**  
名称 Name: 工作台  
Workbench  
规格 Dimension: W1800\*D350/700\*H800/850mm



型号 Model: **SFD-882C**  
名称 Name: 不锈钢工作台  
Working Table With  
Steel Surface  
规格 Dimension: W3000\*D700\*H800mm



型号 Model: **SFD-882A**  
名称 Name: 不锈钢工作台  
Working Table With  
Steel Surface  
规格 Dimension: W1500\*D700\*H800mm



型号 Model: **SFD-885**  
名称 Name: 传递窗  
Transfer Window  
规格 Dimension: W500\*D500\*H500/900mm  
△ 主体优质不锈钢制作  
△ Stainless steel as main structure



> **Explosion-proof Cabinet Series**

防爆柜系列



型号 Model: **SFD-891**  
名称 Name: 全钢药品柜  
All steel medicine cabinet  
规格 Dimension: W1800\*D900\*H450mm



型号 Model: **SFD-892**  
名称 Name: PP 药品柜  
PP Medicine cabinet  
规格 Dimension: W1800\*D900\*H450mm



型号 Model: **SFD-894**  
名称 Name: 45 加仑安全柜  
45 gallon safety cabinet  
规格 Dimension: W1650\*D1090\*H460mm



型号 Model: **SFD-895**  
名称 Name: 气瓶柜  
Gas cylinder tank  
规格 Dimension: W1900\*D1200\*H450mm



型号 Model: **SFD-893**  
名称 Name: 气瓶柜  
Gas cylinder tank  
规格 Dimension: W1900\*D900\*H450mm



型号 Model: **SFD-897**  
名称 Name: 12 加仑毒麻柜  
12 gallon toxic hemp cabinet  
规格 Dimension: W890\*D590\*H460mm



型号 Model: **SFD-896**  
名称 Name: 气瓶柜  
Gas cylinder tank  
规格 Dimension: W1900\*D500\*H450mm



型号 Model: **SFD-898**  
名称 Name: 通风柜  
Fume hood  
规格 Dimension: W1500\*D850\*H2350mm



> Medical Trolley Series

医用推车系列



型号 Model: SFD-Q15  
名称 Name: 急救车  
Emergency Trolley  
规格 Dimension: W620mm\*D475mm\*H920mm



型号 Model: SFD-Q02  
名称 Name: ABS 急救车  
ABS Emergency Trolley  
规格 Dimension: W850-800-750\*D520-475\*H920mm



型号 Model: SFD-Q02A  
名称 Name: 急救车  
ABS Emergency Trolley  
规格 Dimension: W625\*D475\*H920mm



型号 Model: SFD-Q06B  
名称 Name: 送药车  
Medicine Trolley  
规格 Dimension: W870\*D520\*H920mm  
W790\*D480\*H920mm



型号 Model: SFD-Q11A  
名称 Name: 病历车  
Patient Dossier Trolley  
规格 Dimension: W750\*D410\*H980mm  
双排 40 格



型号 Model: SFD-Q11C  
名称 Name: 病历车  
Patient Dossier Trolley  
规格 Dimension: W395\*D405\*H1210mm  
单排 25 格



型号 Model: SFD-Q11D  
名称 Name: 病历车  
Patient Dossier Trolley  
规格 Dimension: W690\*D405\*H1210mm  
双排 50 格



型号 Model: SFD-Q11B  
名称 Name: 病历车  
Patient Dossier Trolley  
规格 Dimension: W450\*D410\*H950mm  
单排 25 格



型号 Model: SFD-Q06A  
名称 Name: 麻醉车  
Anesthesia Trolley  
规格 Dimension: W625\*D475\*H920mm



型号 Model: SFD-Q06AB  
名称 Name: 麻醉车  
Anesthesia Trolley  
规格 Dimension: W625\*D475\*H930mm



型号 Model: SFD-Q09B  
名称 Name: 治疗车  
Treatment Trolley  
规格 Dimension: W650\*D450\*H800mm  
W750\*D500\*H800mm



型号 Model: SFD-Q12D  
名称 Name: 治疗车  
Treatment Trolley  
规格 Dimension: W650\*D420\*H800mm



型号 Model: SFD-Q11E  
名称 Name: 病历车  
Patient Dossier Trolley  
规格 Dimension: W655\*D480\*H1010mm



型号 Model: SFD-Q13A  
名称 Name: 推车  
Trolley  
规格 Dimension: W540\*D365\*H830mm  
W640\*D455\*H830mm  
W760\*D520\*H830mm



型号 Model: SFD-Q13E  
名称 Name: 推车  
Trolley  
规格 Dimension: W500\*D500\*H880mm



型号 Model: SFD-Q13F  
名称 Name: 推车  
Trolley  
规格 Dimension: W500\*D400\*H800mm  
W650\*D450\*H800mm  
W750\*D500\*H800mm



型号 Model: SFD-Q14A  
名称 Name: 手术套车  
Trolley  
规格 Dimension: W600\*D480\*H750mm  
W800\*D490\*H800mm  
W1000\*D520\*H850mm



型号 Model: SFD-Q14B  
名称 Name: 双臂升降手术盆架  
Adjustable Height  
Operation Trolley  
规格 Dimension: W730\*D500\*H900-1400mm



型号 Model: SFD-Q14D  
名称 Name: 单臂升降手术盆架  
Adjustable Height  
Operation Trolley  
规格 Dimension: W650\*D500\*H850-1250mm



型号 Model: SFD-Q14E  
名称 Name: 扇形推车  
Fan-shaped Trolley  
规格 Dimension: W1400\*D450\*H800mm  
W1200\*D420\*H800mm



型号 Model: SFD-Q16  
名称 Name: 治疗车  
Treatment Trolley  
规格 Dimension: W620mm\*D475mm\*H900mm



型号 Model: SFD-Q09A  
名称 Name: 治疗车  
Treatment Trolley  
规格 Dimension: W625\*D475\*H920mm



型号 Model: SFD-Q12AB  
名称 Name: 输液车  
I.V. Trolley  
规格 Dimension: W625\*D475\*H920mm  
W675\*D480\*H920mm



型号 Model: SFD-Q12B  
名称 Name: 输液车  
I.V. Trolley  
规格 Dimension: W650\*D420\*H960mm



型号 Model: SFD-985  
名称 Name: 氧气瓶拖车  
Oxygen Tank Trolley  
规格 Dimension: W1100\*D430\*H1000mm  
△ 主体优质不锈钢制作  
△ Stainless steel as main structure



型号 Model: SFD-Q982  
名称 Name: 护理车  
Nursing Trolley  
规格 Dimension: W900\*D500\*H800mm  
△ 主体优质不锈钢制作  
△ Stainless steel as main structure



型号 Model: SFD-Q983  
名称 Name: 护理车  
Nursing Trolley  
规格 Dimension: W1185\*D570\*H935mm  
△ 体优质碳素结构钢制作、抗菌静电粉末喷涂  
△ High quality carbon steel plate as main structure,electrostation sprayed



型号 Model: SFD-984A  
名称 Name: 污物车  
Garbage Trolley  
规格 Dimension: W780\*D450\*H850mm





## PART03

医疗家具整体解决方案提供商  
Medical furniture overall solution provider

# 诊疗区间 Diagnosis and treatment area

诊疗室

Clinic

妇科诊室

Gynecology Clinic

诊断床 / 诊查床系列

Diagnostic Bed Series

陪护椅 / 输液椅 / 医用凳系列

Accompany Chair/ Transfusion Chair/ Medical Stool Series

婴儿床 / 妇检床系列

Infant Bed/ Gynecological Examination Bed Series

文件柜系列

Filing Cabinet Series





> **Clinic**  
诊疗室



诊疗室是医生与患者直接交流、初步检查、初步诊断，并完成诊查记录的场所。

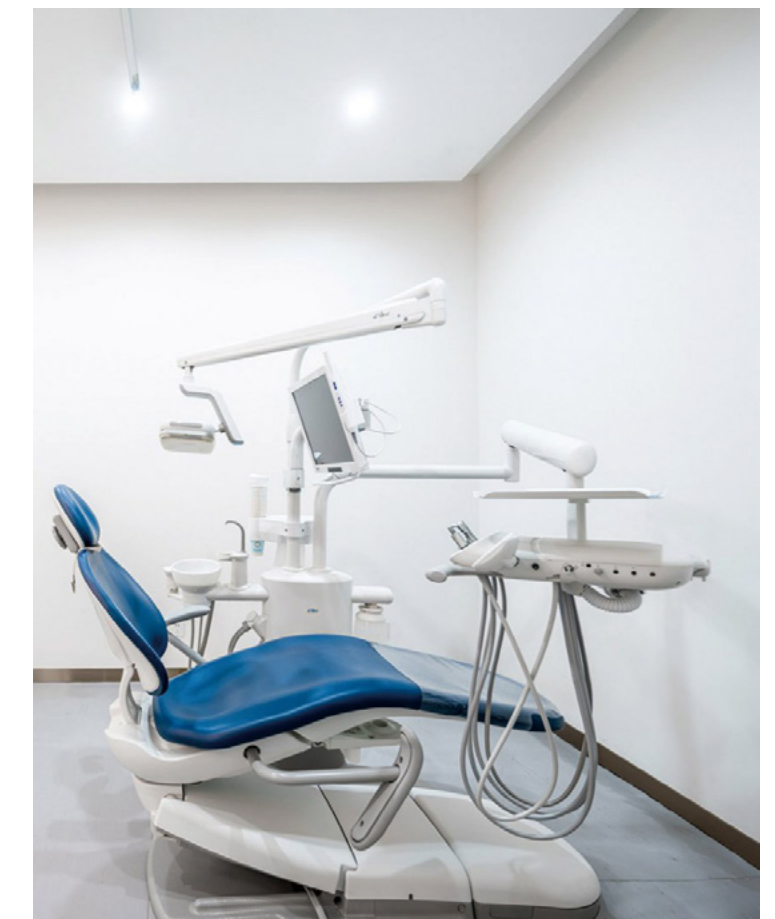
在诊室完成的医疗行为、设备和操作型器具，一般为医一患，需要一定的活动空间，需要一定的隔音，隔视的隐私要求。

The diagnosis and treatment room is the doctor and the patient direct communication, the preliminary examination, the preliminary diagnosis,

The place where the examination records are completed. Medical behaviors, equipment and operational instruments completed in the clinic,

Generally, there is one doctor and one patient, which requires a certain amount of activity space,

It needs certain privacy requirements of sound insulation and vision isolation.





> **Clinic**  
诊疗室

诊疗室的选择和布置：

- 1、舒适和实用；
  - 2、不会因诊疗室的设置而使病人产生对治疗的反感。
- 良好的诊疗室设置可以帮助医生更好的了解病人的需求。

Selection and arrangement of clinic:

- 1. Comfortable and practical
- 2. The setting of the clinic will not make the patients feel disgusted with the treatment.

A good clinic setting can help doctors better understand the needs of patients.

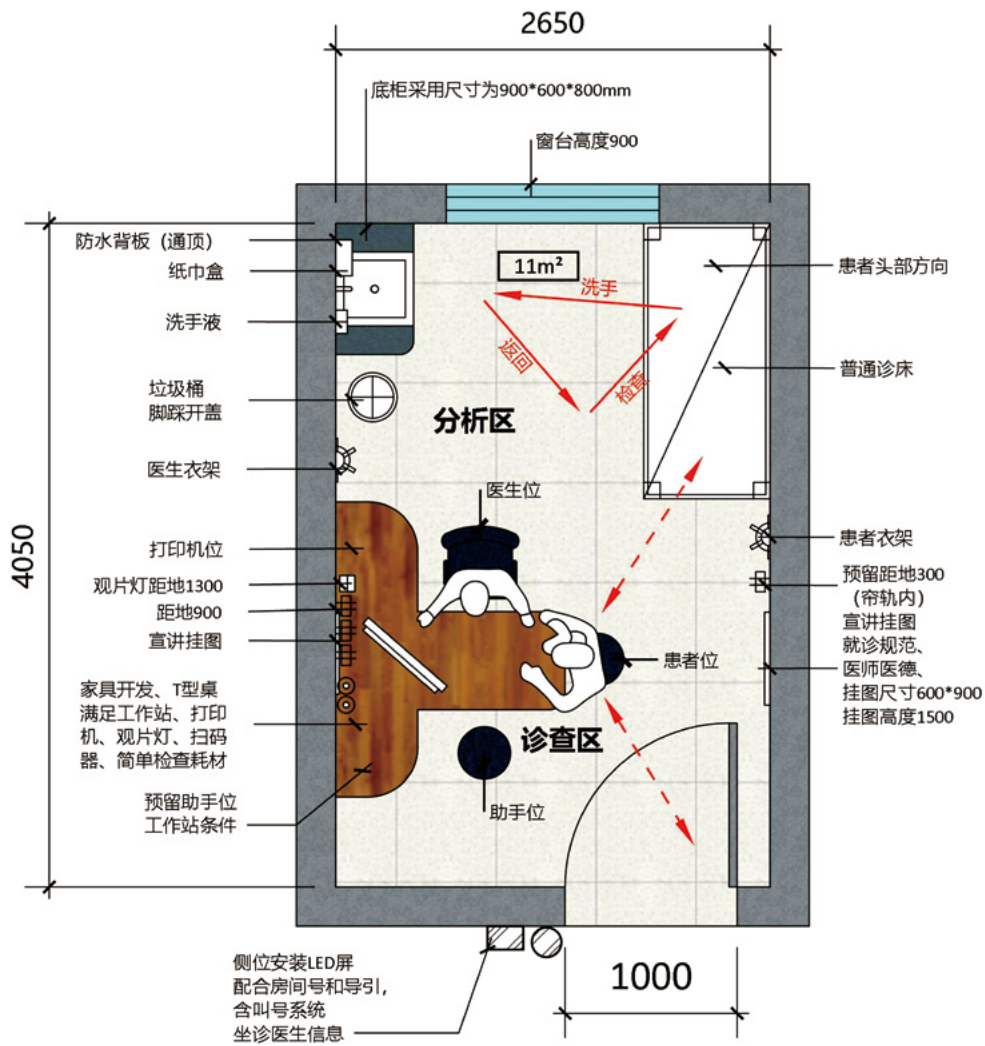






人性化、专业化、现代化，这是赛福德医疗家具一直以来的实际理念。从绿色环保、以人为本、舒适性的原则入手，进而对每一个细节、每一种材料。包括表面的处理、人的触觉、整个的起身角度、都进行了深入研究，只为给医护患者提供一个安全、舒适的诊断场所。

Humanization, specialization and modernization are the practical ideas of saiford medical furniture. From the green environmental protection, people-oriented, comfortable principle, and then to every detail, every material. Including the surface treatment, human touch, the whole stand up angle, have been in-depth research, only to provide a safe and comfortable diagnosis place for medical patients.





> **Gynecology Clinic**  
妇科诊室



对于妇产科诊室的设计，应围绕着医生和患者的感受及真实需求，确保诊室功能的实用性和诊室的舒适性。

妇科诊室室内场所的形状和色彩有一种奇妙的力量，能在默默之中支配患者的心。对诊室的环境建设，可适当加入一点色彩和造型的创新运用，塑造积极、医疗环境。

The design of Obstetrics and gynecology clinics should focus on the feelings and real needs of doctors and patients, so as to ensure the practicability of the function and the comfort of the clinic.

The shape and color of indoor places in gynecological clinics have a wonderful power, which can control the heart of patients in silence. For the environmental construction of the clinic, we can appropriately add some innovative use of color and shape to create a positive and medical environment.





> **Diagnostic Bed series**

诊断床、诊查床系列



型号 Model: **SFD-H01**  
名称 Name: 诊查床  
Diagnostic Bed

规格 Dimension: W1900\*D600\*H650mm  
△ 主体优质碳素结构钢制作    △ Bed frame made of carbon steel plate  
△ 抗菌静电粉末喷涂            △ Electrostation sprayed  
△ 高仿皮 + 高弹海绵床垫       △ High density PU foam with leatherette cover mattress



型号 Model: **SFD-H02**  
名称 Name: 起背诊查床  
Diagnostic Bed

规格 Dimension: W1900\*D600\*H650mm  
△ 主体优质碳素结构钢制作    △ Bed frame made of carbon steel plate  
△ 抗菌静电粉末喷涂            △ Electrostation sprayed  
△ 高仿皮 + 高弹海绵床垫       △ High density PU foam with leatherette cover mattress



型号 Model: **SFD-H05**  
名称 Name: 按摩床  
Massage Bed

规格 Dimension: W1900\*D600\*H650mm  
△ 主体优质碳素结构钢制作    △ Bed frame made of carbon steel plate  
△ 抗菌静电粉末喷涂            △ Electrostation sprayed  
△ 高仿皮 + 高弹海绵床垫       △ High density PU foam with leatherette cover mattress



型号 Model: **SFD-H06**  
名称 Name: 按摩床  
Massage Bed

规格 Dimension: W1900\*D600\*H650mm  
△ 主体优质碳素结构钢制作    △ Bed frame made of carbon steel plate  
△ 抗菌静电粉末喷涂            △ Electrostation sprayed  
△ 高仿皮 + 高弹海绵床垫       △ High density PU foam with leatherette cover mattress



型号 Model: **SFD-HD02**  
名称 Name: 自动换床单诊查床  
Automatic Sheet Changing Examination Bed  
规格 Dimension: W2050\*D700\*H550-900mm  
△ 主体优质碳素结构钢制作    △ Bed frame made of carbon steel plate  
△ 抗菌静电粉末喷涂            △ Electrostation sprayed  
△ 高仿皮 + 高弹海绵床垫       △ High density PU foam with leatherette cover mattress

> **Accompany Chair,Transfusion**

**Chair, Medical stool series**

陪护椅、输液椅、医用凳系列



型号 Model: **SFD-931**  
名称 Name: 陪护椅  
Accompany Chair  
规格 Dimension: W650\*D620\*H420mm  
展开 Open: W1900\*D640\*H420-540mm  
△ 高仿皮 + 高弹海绵坐垫  
△ 主体不锈钢材质制作  
△ Material: High dense sponge + leatherette cover cushion  
△ Stainless steel as main structure



型号 Model: **SFD-934**  
名称 Name: 陪护椅  
Accompany Chair  
规格 Dimension: W840\*D640\*H900mm  
展开 Open: W1900\*D640\*H420-540mm  
△ 高仿皮 + 高弹海绵坐垫  
△ 主体优质碳素结构钢制制作、抗菌静电粉末喷涂  
△ Material: High dense sponge + leatherette cover cushion  
△ High quality carbon steel plate as main structure  
electronstation sprayed



型号 Model: **SFD-933A**  
名称 Name: 输液椅  
Transfusion Chair  
规格 Dimension: W1050\*D690\*H450/1200mm  
△ 高仿皮 + 高弹海绵加厚坐垫  
△ 主体不锈钢或钢质材质制作  
△ Material: High dense sponge + leatherette cover cushion  
△ Stainless steel as main structure



型号 Model: **SFD-933**  
名称 Name: 输液椅  
Transfusion Chair  
规格 Dimension: W720\*D640\*H820mm  
△ 高仿皮 + 高弹海绵坐垫  
△ 主体不锈钢或钢质材质制作  
△ Material: High dense sponge + leatherette cover cushion  
△ Stainless steel as main structure



型号 Model: **SFD-950**  
名称 Name: 医用凳  
Medical Stool



型号 Model: **SFD-951**  
名称 Name: 医用凳  
Medical Stool



> **Infant Bed,Gynecological  
Examination Bed Series**

婴儿车、妇检床系列



型号 Model: **SFD-G01A**  
名称 Name: 婴儿床

Infant Bed

规格 Dimension: W900\*D520\*H780~980mm

△ 气控装置辅助升降调节高低      △ Adjustable height by gas spring

△ 头部抬高倾斜角度 0~10°      △ Head lifting angle:0~10°



型号 Model: **SFD-G03A**  
名称 Name: 婴儿床

Infant Bed

规格 Dimension: W820\*D500\*H850mm

△ 头部抬高倾斜角度 0~10°      △ Head lifting angle:0~10°



型号 Model: **SFD-K01A**  
名称 Name: 妇检床

Gynecological Examination Bed

规格 Dimension: W1900\*D680\*H830

△ 背部床板倾斜角度 0~45°      △ Back section lifting angle:0~45°

△ 腿部床板倾斜角度 -90~40°      △ Leg section lifting angle:-90~40°

△ 主体优质不锈钢构钢制作      △ Stainless steel frame

△ 优质高仿皮外套内包高弹海绵床垫      △ PU foam with leatherette cover mattress

△ 配有不锈钢污物盆、不锈钢脚踏蹬和点滴架      △ Accessory:S.S basin;Hand trip;S.S stirrups;IV stand



型号 Model: **SFD-K02A**  
名称 Name: 妇检床

Gynecological Examination Bed

规格 Dimension: W1900\*D680\*H830

△ 背部床板倾斜角度 0~45°      △ Back section lifting angle:0~45°

△ 腿部床板倾斜角度 -90~40°      △ Leg section lifting angle:-90~40°

△ 主体优质不锈钢构钢制作      △ Stainless steel frame

△ 优质高仿皮外套内包高弹海绵床垫      △ PU foam with leatherette cover mattress

△ 配有不锈钢污物盆、不锈钢脚踏蹬和点滴架      △ Accessory:S.S basin;Hand trip;S.S stirrups;IV stand

> **Filing Cabinet Series**

文件柜系列



型号 Model: **SFD-W01**  
名称 Name: 文件柜

Filing Cabinet

规格 Dimension: W850\*D390\*H1800mm



型号 Model: **SFD-W02**  
名称 Name: 文件柜

Filing Cabinet

规格 Dimension: W850\*D390\*H1800mm



型号 Model: **SFD-W03**  
名称 Name: 文件柜

Filing Cabinet

规格 Dimension: W850\*D390\*H1800mm



型号 Model: **SFD-W09**  
名称 Name: 文件柜

Filing Cabinet

规格 Dimension: W900\*D400\*H1850mm



型号 Model: **SFD-W10**  
名称 Name: 文件柜

Filing Cabinet

规格 Dimension: W900\*D400\*H1850mm



型号 Model: **SFD-W12**  
名称 Name: 文件更衣柜

Steel Locker

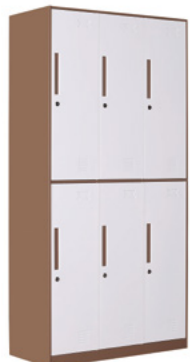
规格 Dimension: W970\*D450\*H1850mm



型号 Model: **SFD-W13**  
名称 Name: 文件柜

Filing Cabinet

规格 Dimension: W900\*D400\*H1850mm



型号 Model: **SFD-W14**  
名称 Name: 6 门更衣柜

6 doors steel locker

规格 Dimension: W900\*D450\*H1850mm



型号 Model: **SFD-W15**  
名称 Name: 文件柜

Filing Cabinet

规格 Dimension: W900\*D400\*H1850mm





## PART04

医疗家具整体解决方案提供商  
Medical furniture overall solution provider

# 药房、库房 Pharmacy, warehouse

西药房

Pharmacy

中药房

TCM Pharmacy

柜体系列

Cabinet Series

药架系列

Medicine Rack Series

西药柜系列

Western Medicine Cabinet Series

中药柜系列

Chinese Medicine Cabinet Series





> Pharmacy  
西药房

医院药房是集管理、技术、经营、服务等于一体的综合性科室。  
药房不仅要保证提供给患者准确、质量合格的药品，  
而且要保证患者安全有效地使用药品，确保医疗费用更为经济合理。

Hospital pharmacy is a comprehensive department which  
integrates management, technology, operation and service.

Pharmacies should not only provide accurate and qualified  
drugs to patients, but also ensure the safe and effective use of  
drugs by patients, so as to ensure that the medical expenses  
are more economical and reasonable.







医用药架特点为耐用性强、防腐蚀、防锈，  
医用药架的设计特别注重环保度，  
便于医院保持干净，卫生，保护药材的质量，防蛀、防潮。

The medical medicine rack is characterized by strong durability, anti-corrosion and anti rust.  
The design of medical medicine rack pays special attention to environmental protection, which is convenient for the hospital to keep clean and hygienic, protect the quality of medicinal materials, and prevent moth and moisture.



> **TCM Pharmacy**  
中药房

中药房，是每个医院所必设的科室，中药房内有药柜，按照中医的药性、类别，分门别类摆设；还有中药制作、加工的场所。有负责全院各部的中药采购和供应；有煎药室，负责全院门诊、住院病人的中药煎送工作；有中药炮制室，负责提供高效优质的中药品种、及中药材的处理工作。

The traditional Chinese medicine room is a necessary department in every hospital. There is a medicine cabinet in the traditional Chinese medicine room,

According to the nature and category of traditional Chinese medicine, they are arranged in different categories;

There are also places for the production and processing of traditional Chinese medicine. There are departments responsible for the procurement and supply of traditional Chinese medicine in the whole hospital; there is a decocting room, which is responsible for the decocting and delivering of Chinese medicine for outpatient and inpatients;

There is a Chinese medicine processing room, which is responsible for providing efficient and high-quality varieties of traditional Chinese medicine and the treatment of Chinese medicine.







型号 Model: SFD-904A  
名称 Name: 电动病理储片密集架  
Electric pathological storage rack

#### 电动病理储片密集架简介：

电动病理储片密集架是专门用来存放各种病历档案的病历密集架，具有节省空间、稳固安全、保密性高安全性高等特性。

电动病理储片密集架采用优质冷轧钢板模压成型、密集柜表面经除油、去锈、磷化等十道工序前处理。国际最新流行色亚光静电喷粉，是经高温塑化而成，防锈蚀性能卓越。病理储片密集架架体外观设计精美线条流畅使库房整洁美观，操作轻便灵活运行平稳。病理储片密集架采用组合装配式设计搬迁和拆装均不受损。每列架体设有安全限位及防倾倒装置密集柜。以保障通道内人员安全。病理储片密集架边架装有锁具用于整体锁闭。病理储片密集架架体之间的接触面均有缓冲和磁密封胶条。顶部有防尘板，底部有防鼠装置。具有良好的防尘、防鼠、防潮和防火功能。传动机构采用精密轴承，传动灵活平稳。层板层距根据需要可自由调整。

#### Brief introduction of electric pathological storage rack:

The electric pathological storage rack is a medical record rack specially used to store various medical record files. It has the characteristics of space saving, stability and safety, high confidentiality and high security.

The electric pathological film storage rack is made of high-quality cold-rolled steel plate molding, and the surface of the cabinet is pre-treated by ten processes such as oil removal, rust removal, and phosphating etc. The latest international popular color matt electrostatic powder is plasticized at high temperature, and has excellent anti-corrosion performance.

The pathological storage racks have exquisite appearance design and smooth lines, which make the warehouse clean and beautiful, and the operation is light and flexible, stable. The pathological film storage rack adopts a combined assembly design without damage to relocation and disassembly. Each row of racks is provided with a safety limit and an anti-tilt mechanism. To ensure the safety of people in the channel. The side frame of the pathological storage rack is equipped with a lock for overall locking. There are buffers and magnetic sealing tapes on the contact surfaces between the pathological storage racks. There is a dust-proof plate on the top and a rat-proof device on the bottom. It has good dustproof, anti-rat, moisture-proof and fire-proof functions. The transmission mechanism adopts precision bearings, and the transmission is flexible and stable. The shevels distance can be adjusted flexible.



型号 Model: SFD-902A  
名称 Name: 切片柜  
Single Side Medicine Shelf  
规格 Dimension: W515\*D480\*H1520mm

切片柜由底座和四节柜体组成。底座高 80 公分由 1.2mm 厚优质电解板制作。

( 电解板材质仅次于不锈钢板，优于冷轧板，耐酸碱、耐腐蚀 )。

柜体为 1.0mm 厚优质电解板。

每节柜体由九个抽屉组成，抽屉为 0.8mm 优质电解板。

经模具化钣金流水线精工而成。耐压、强度大、抗冲击不易变形。

外表采用阿克苏、诺贝尔绿色环保的医用专用喷塑粉。

经九工位磷化喷塑而成。切片柜每节可存放标准玻璃切片 16200 片， 每组可存放切片 64800 片以上。



型号 Model: SFD-902B  
名称 Name: 蜡块柜  
Single Side Medicine Shelf  
规格 Dimension: W515\*D480\*H1520mm

蜡块柜由底座和四节柜体组成。底座高 80 公分由 1.2mm 厚优质电解板制作。

( 电解板材质仅次于不锈钢板，优于冷轧板，耐酸碱、耐腐蚀 )。

柜体为 1.0mm 厚优质电解板。

每节柜体由五个抽屉组成，经模具化钣金流水线精工而成。耐压、强度大、抗冲击不易变形。

外表采用阿克苏、诺贝尔绿色环保的医用专用喷塑粉。

经九工位磷化喷塑而成。

蜡块柜每节可存放标准玻璃蜡块 3660 块， 每组可存放蜡块 14640 块。



型号 Model: SFD-902C  
名称 Name: 晾片柜  
Single Side Medicine Shelf  
规格 Dimension: W515\*D480\*H1520mm

晾片柜由底座和四节柜体组成。底座高 80 公分由 1.2mm 厚优质电解板制作。

( 电解板材质仅次于不锈钢板，优于冷轧板，耐酸碱、耐腐蚀 )。

柜体为 1.0mm 厚优质电解板。

每节柜体由五个抽屉组成，经模具化钣金流水线精工而成。

耐压、强度大、抗冲击不易变形。

外表采用阿克苏、诺贝尔绿色环保的医用专用喷塑粉。

经九工位磷化喷塑而成。

晾片柜每节可存放晾片 3000 片， 每组可存放晾片 12000 片。

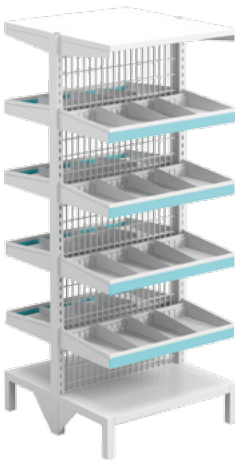


> **Medicine Rack Series**

药架系列



型号 Model: **SFD-898**  
名称 Name: 单面药盘架  
Single Sided Medicine Shelf  
规格 Dimension: W800\*D460\*H2000mm



型号 Model: **SFD-898A**  
名称 Name: 双面药盘架  
Double Sided Medicine Shelf  
规格 Dimension: W800\*D880\*H2000mm



型号 Model: **SFD-898B**  
名称 Name: 双面药盘架  
Double Sided Medicine Shelf  
规格 Dimension: W800\*D880\*H2000mm



型号 Model: **SFD-903**  
名称 Name: 旋转药架  
Rotating Medicine Shelf  
规格 Dimension: W930\*H2000mm



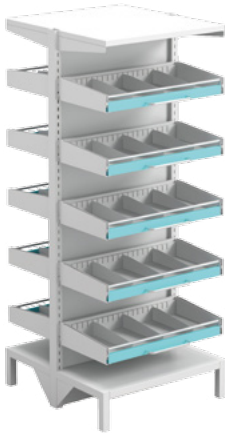
型号 Model: **SFD-903A**  
名称 Name: 台式旋转药架  
Rotating Medicine Shelf



型号 Model: **SFD-899A**  
名称 Name: 开放式药架  
Open medicine rack  
规格 Dimension: W900\*D460\*H2000mm



型号 Model: **SFD-899B**  
名称 Name: 单向药盘架  
Single Side Medicine Shelf  
规格 Dimension: W800\*D460\*H2000mm



型号 Model: **SFD-899D**  
名称 Name: 双向药盘架  
Double Side Medicine Shelf  
规格 Dimension: W800\*D860\*H2000mm



型号 Model: **SFD-H08**  
名称 Name: 药架 / 货架  
Heavy Duty Medicine Shelf  
规格 Dimension: W2000\*D500\*H2000mm



型号 Model: **SFD-H09**  
名称 Name: 药架 / 货架  
Heavy Duty Medicine Shelf  
规格 Dimension: W2000\*D500\*H2000mm



型号 Model: **SFD-897**  
名称 Name: 间板卷门药柜  
Medicine Cabinet With Shutter Door  
规格 Dimension: W1000\*D500\*H2000



> **Medicine Cabinet Series**

西药柜系列



型号 Model: **SFD-X001**  
名称 Name: 西药柜  
Western Medicine Cabinet  
规格 Dimension: W900\*D400/250\*H1850mm



型号 Model: **SFD-X002**  
名称 Name: 西药柜  
Western Medicine Cabinet  
规格 Dimension: W900\*D400/250\*H1850mm



型号 Model: **SFD-X003**  
名称 Name: 西药柜  
Western Medicine Cabinet  
规格 Dimension: W900\*D400/250\*H1850mm



型号 Model: **SFD-X004**  
名称 Name: 西药柜  
Western Medicine Cabinet  
规格 Dimension: W900\*D400/250\*H1850mm

> **TCM Cabinet Series**

中药柜系列



型号 Model: **SFD-895**  
名称 Name: 中药柜  
Chinese Medicine Cabinet  
规格 Dimension: W1910\*D620\*H1240-790mm



型号 Model: **SFD-896**  
名称 Name: 中药柜  
Chinese Medicine Cabinet  
规格 Dimension: W1910\*D625\*H1240-790mm



型号 Model: **SFD-896B**  
名称 Name: 中药柜  
Chinese Medicine Cabinet  
规格 Dimension: W1910\*D430/655\*H2057mm



型号 Model: **SFD-896D**  
名称 Name: 中药柜  
Chinese Medicine Cabinet  
规格 Dimension: W1200\*D500\*H1950mm





## PART05

医疗家具整体解决方案提供商  
Medical furniture overall solution provider

# 住院部 Inpatient Department

病房

Ward

病床系列

Hospital Bed Series

儿童床系列

Children Bed Series

骨科牵引床系列

Orthopedic Bed Series

医用床头柜系列

Medical Bedside Cabinet Series

配件

Parts



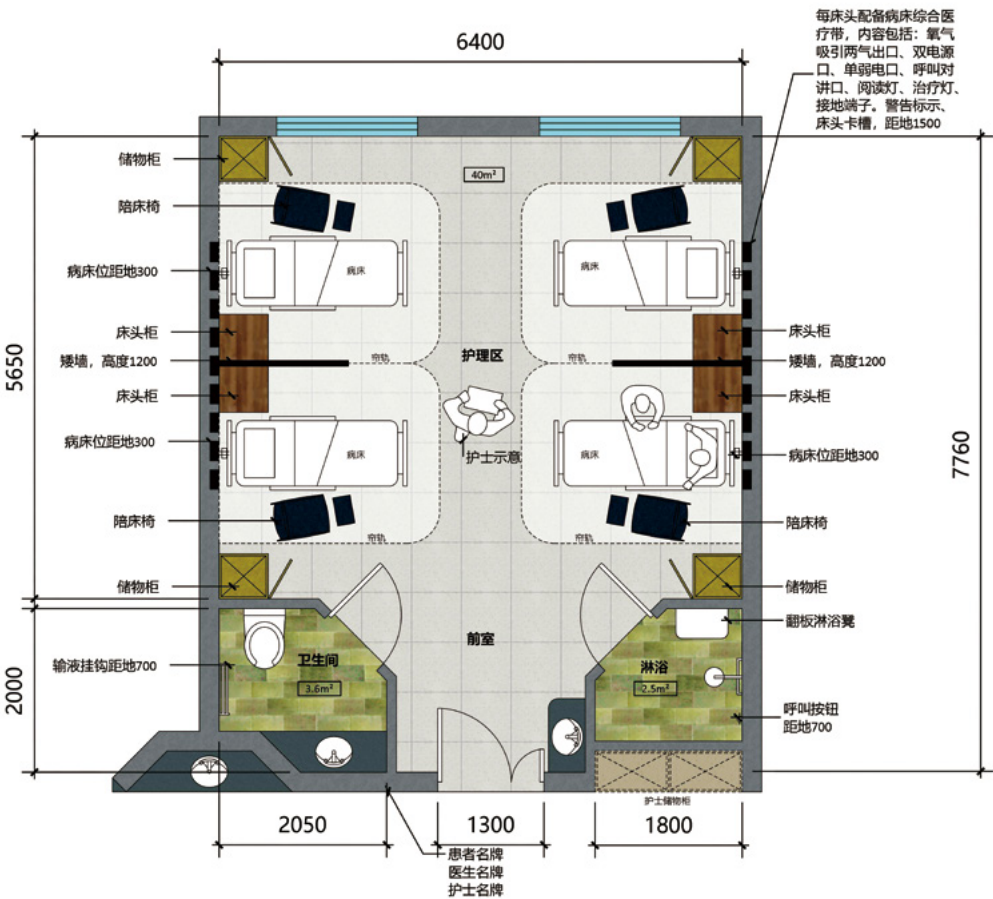




> **General Ward**  
普通病房

病房的解决方案基于医护人员、患者及家属的需要，进行个性化产品设计，对空间合理规划，增加使用舒适性，提升患者、家属、医院访客医疗空间的体验感。

Ward solutions based on the needs of medical staff, patients and their families, personalized product design, reasonable space planning, increase the use of comfort, improve the experience of patients, family members, hospital visitors medical space.





## > General Ward

普通病房



优雅流幅的外形洋溢着令人心动的美感，再现科技与美学的结合，卓越的舒适性与多功能赋予使用者一份悠然自得的感觉。

The elegant appearance of the flow is full of exciting aesthetic feeling.  
It reproduces the combination of technology and aesthetics.  
The excellent comfort and multi-function give the user a feeling of carefree.

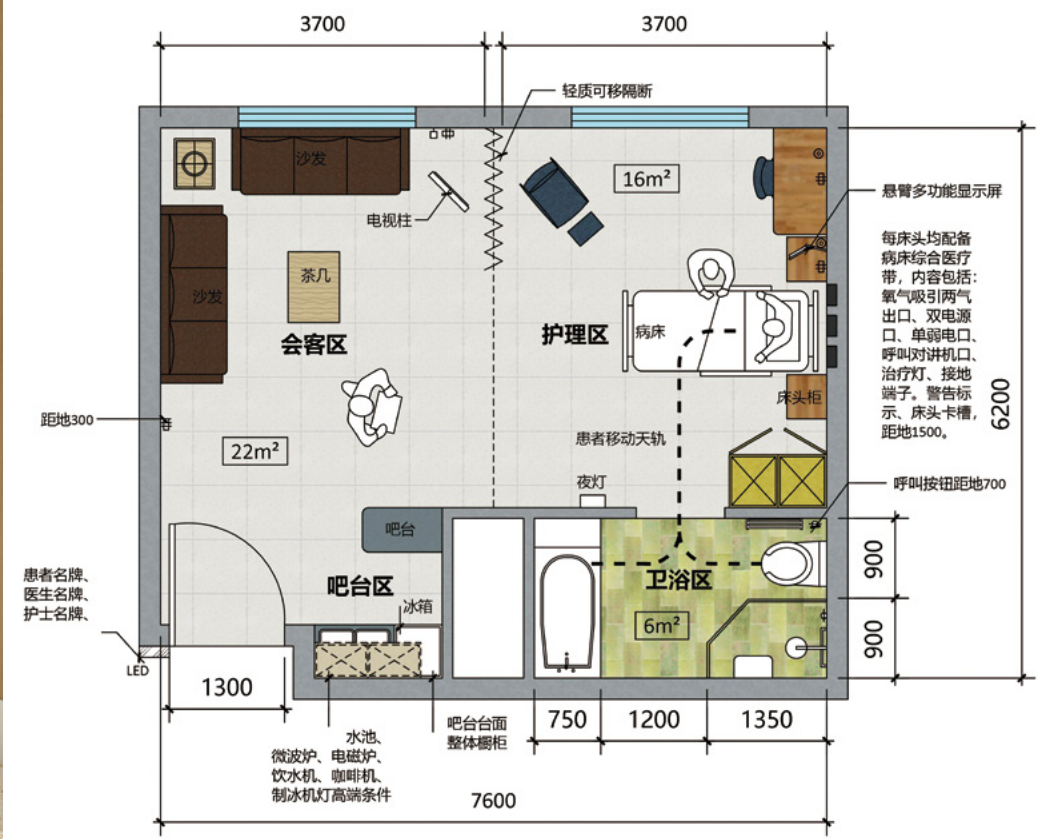




> **VIP Ward**  
VIP 病房

病房解决方案以医护人员、患者及家属的需求为出发点，进行个性化的产品设计，合理规划空间，增加使用的舒适度，提升患者、家属及来院人员的就医体验。

The solution for the ward is based on the needs of medical staff, patients and family members, and carries out personalized product design, rationally plans the space, increases the comfort of use, and improves the experience of patients, family members and hospital visitors in the medical space.





## > The Children's Ward

儿童病房

为了给小患者营造更温馨便利的就诊环境和就医条件，  
赛福德推出儿科病房家具，为 16 周岁以下患儿常见病、多发病提供更加规范化的诊疗服务。

In order to create a more warm and convenient medical environment and conditions for children, Safety Medical Technology Co.,Ltd launched pediatric ward furniture to provide more standardized diagnosis and treatment services for children under 16 years old with common diseases and frequently occurring diseases.





## > Chinese Ward

### 中式病房

中式病房，中国文化韵味十足

中式病房都有共同的特点：宽敞明亮、环境优雅、设备先进。

病房里，除了一张新式高科技含量的病床以外，写字台和衣柜都是胡桃木的中式复古风格，到处透露着传统中国文化。

Chinese style ward, full of Chinese culture charm

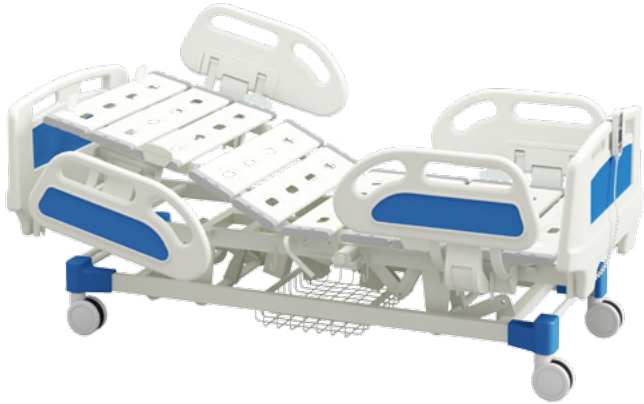
Chinese wards have common characteristics: spacious and bright, elegant environment, advanced equipment.

In addition to the traditional Chinese style, there is a Chinese style hospital bed.

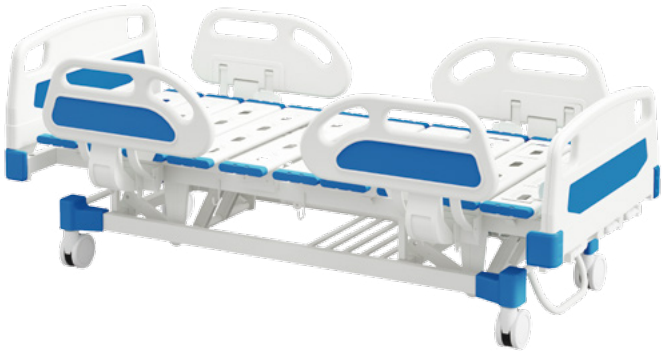


> Multifunctional Hospital Bedseries

多功能护理床系列



型号 Model: SFD-5202  
名称 Name: 电动护理床  
Electric Hospital Bed  
规格 Dimension: W2150\*D1000\*H480-760mm  
△ 背部床板倾斜角度 0-75°    △ Back section lifting angle:0-75°  
△ 腿部床板倾斜角度 0-40°    △ Leg section lifting angle:0-40°  
△ 整床升降 480-760mm    △ Whole bed up/down:480-760mm  
△ 前后倾斜各 0-13°    △ Trendelenbury/Reverse Tren angle:0-13°



型号 Model: SFD-B3201  
名称 Name: 三摇升降护理床  
3 Cranks Manual Bed  
规格 Dimension: W2130\*D1000\*H500-780mm  
△ 背部床板倾斜角度 0-75°    △ Back section lifting angle:0-75°  
△ 腿部床板倾斜角度 0-40°    △ Leg section lifting angle:0-40°  
△ 整床升降 480-760mm    △ Whole bed up/down:480-760mm



型号 Model: SFD-5204  
名称 Name: 电动护理床  
Electric Hospital Bed  
规格 Dimension: W2150\*D1000\*H480-760mm  
△ 背部床板倾斜角度 0-75°    △ Back section lifting angle:0-75°  
△ 腿部床板倾斜角度 0-40°    △ Leg section lifting angle:0-40°  
△ 整床升降 480-760mm    △ Whole bed up/down:480-760mm  
△ 前后倾斜各 0-13°    △ Trendelenbury/Reverse Tren angle:0-13°



型号 Model: SFD-B3104  
名称 Name: 三摇升降护理床  
3 Cranks Manual Bed  
规格 Dimension: W2150\*D1000\*H500-700mm  
△ 背部床板倾斜角度 0-75°    △ Back section lifting angle:0-75°  
△ 腿部床板倾斜角度 0-40°    △ Leg section lifting angle:0-40°  
△ 整床升降 480-760mm    △ Whole bed up/down:480-760mm



型号 Model: SFD-3201  
名称 Name: 电动护理床  
Electric Hospital Bed  
规格 Dimension: W2150\*D1000\*H480-760mm  
△ 背部床板倾斜角度 0-75°    △ Back section lifting angle:0-75°  
△ 腿部床板倾斜角度 0-40°    △ Leg section lifting angle:0-40°  
△ 整床升降 480-760mm    △ Whole bed up/down:480-760mm



型号 Model: SFD-B3101A  
名称 Name: 三摇升降护理床  
Three Crank Manual Bed  
规格 Dimension: W2150\*D960\*H500-780mm  
△ 背部床板倾斜角度 0-75°    △ Back section lifting angle:0-75°  
△ 腿部床板倾斜角度 0-40°    △ Leg section lifting angle:0-40°  
△ 整床升降 500-780mm    △ Whole bed up/down:500-780mm

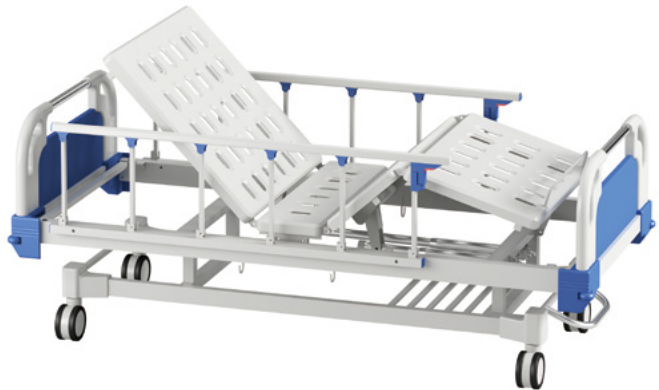


> Multifunctional Hospital Bed Series

多功能护理床系列



型号 Model: **SFD-B3110A**  
名称 Name: 三摇升降护理床  
3 Cranks Manual Bed  
规格 Dimension: W2130\*D1000\*H500-780mm  
△ 背部床板倾斜角度 0-75°    △ Back section lifting angle:0-75°  
△ 腿部床板倾斜角度 0-40°    △ Leg section lifting angle:0-40°  
△ 整床升降 500-780mm    △ Whole bed up/down:500-780mm



型号 Model: **SFD-B2205B**  
名称 Name: 双摇护理床  
2 Cranks Manual Bed  
规格 Dimension: W2130\*D960\*H500mm  
△ 背部床板倾斜角度 0-75°    △ Back section lifting angle:0-75°  
△ 腿部床板倾斜角度 0-40°    △ Leg section lifting angle:0-40°



型号 Model: **SFD-B2201**  
名称 Name: 双摇护理床  
2 Cranks Manual Bed  
规格 Dimension: W2150\*D1000\*H500mm  
△ 背部床板倾斜角度 0-75°    △ Back section lifting angle:0-75°  
△ 腿部床板倾斜角度 0-40°    △ Leg section lifting angle:0-40°



型号 Model: **SFD-B2101**  
名称 Name: 双摇护理床  
2 Cranks Manual Bed  
规格 Dimension: W2130\*D960\*H500mm  
△ 背部床板倾斜角度 0-75°    △ Back section lifting angle:0-75°  
△ 腿部床板倾斜角度 0-40°    △ Leg section lifting angle:0-40°



型号 Model: **SFD-B2201A**  
名称 Name: 双摇护理床  
2 Cranks Manual Bed  
规格 Dimension: W2150\*D960\*H500mm  
△ 背部床板倾斜角度 0-75°    △ Back section lifting angle:0-75°  
△ 腿部床板倾斜角度 0-40°    △ Leg section lifting angle:0-40°



型号 Model: **SFD-B2007A**  
名称 Name: 双摇护理床  
2 Cranks Manual Bed  
规格 Dimension: W2080\*D960\*H500mm  
△ 背部床板倾斜角度 0-75°    △ Back section lifting angle:0-75°  
△ 腿部床板倾斜角度 0-40°    △ Leg section lifting angle:0-40°



> Multifunctional Manual Hospital Bed Series

多功能手动护理床系列



型号 Model: SFD-B2110  
名称 Name: 双摇护理床  
2 Cranks Hospital Bed  
规格 Dimension: W2150\*D1000\*H500mm  
△ 背部床板倾斜角度 0-75°    △ Back section lifting angle:0-75°  
△ 腿部床板倾斜角度 0-40°    △ Leg section lifting angle:0-40°



型号 Model: SFD-B1007A  
名称 Name: 单摇护理床  
Single Crank Hospital Bed  
规格 Dimension: W2130\*D960\*H500mm  
△ 背部床板倾斜角度 0-75°    △ Back section lifting angle:0-75°



型号 Model: SFD-B1107  
名称 Name: 单摇护理床  
Single Crank Hospital Bed  
规格 Dimension: W2130\*D960\*H500mm  
△ 背部床板倾斜角度 0-75°    △ Back section lifting angle:0-75°



型号 Model: SFD-B1007B  
名称 Name: 单摇护理床  
Single Crank Hospital Bed  
规格 Dimension: W2080\*D960\*H500mm  
△ 背部床板倾斜角度 0-75°    △ Back section lifting angle:0-75°



型号 Model: SFD-B1107A  
名称 Name: 单摇护理床  
Single Crank Hospital Bed  
规格 Dimension: W2130\*D960\*H500mm  
△ 背部床板倾斜角度 0-75°    △ Back section lifting angle:0-75°



型号 Model: SFD-D007D  
名称 Name: 普通平床  
Flat Bed  
规格 Dimension: W2080\*D960\*H500mm



> Home Care Bed Series

家庭护理床系列



型号 Model: **SFD-5102**  
名称 Name: 电动翻身护理床  
Electric Nursing Bed  
规格 Dimension: W2130\*D1050\*H520mm  
△ 背部床板倾斜角度 0~75°      △ Back section lifting angle:0~75°  
△ 背板两侧防侧滑 0~40°      △ Back section anti-slide angle:0~40°  
△ 座板部防下滑 0~15°      △ Seat section anti-slide angle:0~15°  
△ 腿部床板倾斜角度 -75~40°      △ Leg section lifting angle:-75~40°  
△ 左右侧翻各 0~45°      △ Lateral turn-over angle:0~45°



型号 Model: **SFD-B3112B**  
名称 Name: 家庭翻身护理床  
Home Turn Over Nursing Bed  
规格 Dimension: W2130\*D980\*H500mm  
△ 背部床板倾斜角度 0~75°      △ Back section lifting angle:0~75°  
△ 左右侧翻各 0~45°      △ Lateral turn-over angle:0~45°  
△ 腿部床板倾斜角度 -75~40°      △ Leg section lifting angle:-75~40°



型号 Model: **SFD-B3112**  
名称 Name: 家庭翻身护理床  
Family Nursing Bed  
规格 Dimension: W2130\*D960\*H500mm  
△ 背部床板倾斜角度 0~75°      △ Back section lifting angle:0~75°  
△ 左右侧翻各 0~45°      △ Lateral turn-over angle:0~45°  
△ 腿部床板倾斜角度 -75~40°      △ Leg section lifting angle:-75~40°



型号 Model: **SFD-B3112A**  
名称 Name: 家庭三摇升降护理床  
Family Three Crank Nursing Bed  
规格 Dimension: W2060\*960\*H500~780mm  
△ 背部床板倾斜角度 0~75°      △ Back section lifting angle:0~75°  
△ 腿部床板倾斜角度 0~40°      △ Lateral turn-over angle:0~45°  
△ 整床升降 500~780mm      △ Whole bed up/down:500~780mm



型号 Model: **SFD-B3113**  
名称 Name: 家庭翻身护理床  
Family Nursing Bed  
规格 Dimension: W2040\*D960\*H500mm  
△ 背部床板倾斜角度 0~75°      △ Back section lifting angle:0~75°  
△ 左右侧翻各 0~45°      △ Lateral turn-over angle:0~45°  
△ 腿部床板倾斜角度 -75~40°      △ Leg section lifting angle:-75~40°



型号 Model: **SFD-B2112C**  
名称 Name: 家庭单摇护理床  
Family Single Crank Nursing Bed  
规格 Dimension: W2040\*D960\*H500mm  
△ 背部床板倾斜角度 0~75°      △ Back section lifting angle:0~75°



> Children Bed Series

儿童床系列



型号 Model: SFD-F103B  
名称 Name: 儿童床  
Children Bed  
规格 Dimension: W1900\*D900\*H620/1260mm  
△ 背部床板倾斜角度 0-65°  
△ Back section lifting angle:0-65°

> Orthopedic Bed Series

骨科牵引床系列



型号 Model: SFD-E001  
名称 Name: 骨科牵引床  
Orthopedic Traction Bed  
规格 Dimension: W2220\*D980\*H500mm  
△ 背部床板倾斜角度 0-75°    △ Back section lifting angle:0-75°  
△ 腿部床板倾斜角度 0-40°    △ Lateral section lifting angle:0-40°  
△ 可分腿调节    △ Left & Right leg adjustable angle  
△ 头低脚高调节角度 0-10°    △ Trendelenbury Angle:0-10°  
△ 优质不锈钢牵引支架    △ Stainless steel traction frame



型号 Model: SFD-F108D  
名称 Name: 儿童床  
Children Bed  
规格 Dimension: W1900\*D900\*H620mm  
△ 背部床板倾斜角度 0-65°  
△ Back section lifting angle:0-65°



型号 Model: SFD-E009  
名称 Name: 骨科牵引床  
Orthopedic Traction Bed  
规格 Dimension: W2080\*D900\*H500mm  
△ 背部床板倾斜角度 0-75°    △ Back section lifting angle:0-75°  
△ 腿部床板倾斜角度 0-40°    △ Lateral section lifting angle:0-40°  
△ 可分腿调节    △ Left & Right leg adjustable angle



> Medical Bedside Cabinet series

医用床头柜系列



型号 Model: SFD-801  
名称 Name: ABS 床头柜  
ABS Bedside Cabinet  
规格 Dimension: W480\*D480\*H760mm  
W450\*D420\*H720mm



型号 Model: SFD-802  
名称 Name: ABS 床头柜  
ABS Bedside Cabinet  
规格 Dimension: W480\*D480\*H760mm



型号 Model: SFD-805  
名称 Name: ABS 床头柜  
ABS Bedside Cabinet  
规格 Dimension: W450\*D460\*H800mm



型号 Model: SFD-804  
名称 Name: 床头柜  
Bedside Cabinet  
规格 Dimension: W470\*D420\*H750mm



型号 Model: SFD-807  
名称 Name: 床头柜  
Bedside Cabinet  
规格 Dimension: W470\*D410\*H750mm



型号 Model: SFD-810  
名称 Name: 床头柜  
Bedside Cabinet  
规格 Dimension: W470\*D410\*H750mm



型号 Model: SFD-813  
名称 Name: 不锈钢床头柜  
Stainless Steel Bedside Cabinet  
规格 Dimension: W470\*D410\*H750mm



型号 Model: SFD-815  
名称 Name: 床头柜  
Bedside Cabinet  
规格 Dimension: W475\*D410\*H750mm



型号 Model: SFD-816  
名称 Name: 床头柜  
Bedside Cabinet  
规格 Dimension: W450\*D420\*H740mm

> Parts

配件



型号 Model: SFD-814  
名称 Name: 陪护床头柜  
Accompany Bedside Cabinet  
规格 Dimension: W600\*D530\*H750mm



型号 Model: SFD-995  
名称 Name: 不锈钢屏风  
Stainless Steel Screen



型号 Model: SFD-996  
名称 Name: 钢制屏风  
Steel Screen



型号 Model: SFD-991A  
名称 Name: 点滴架  
Drip Stand



型号 Model: SFD-991B  
名称 Name: 点滴架  
Drip Stand



# Service guarantee

## 服务保障

### 售前服务 Pre-sale service

客户接洽，公司根据客户提供的医养项目需求、CAD 图，制作项目设计方案及项目预算，并提出合理化的建议。

Receiving customers, and putting forward reasonable suggestions according to medical care project requirements, CAD drawings, project design plans and project budgets provided by the customers.

### 售中服务 In-sale service

签订合同，公司安排人员到现场测量，测量数据发至效果设计师，设计师出具场景效果图，客户确定，车间生产，质检部门检验合格后，安排物流送货，工人到现场进行安装，客户验收。

Signed the contract, then company will arrange technicians to measure on site. The designer issues a scene rendering draft accord with measurement data. Workshop production will be arranged as we got customers' approve. Before delivery we will carry out three times quality inspection. And we send goods out by logistics delivery. and the workers go to the site to install and wait for acceptance.

### 售后服务 After-sales service

售后有公司业务员持续跟进客户产品的使用情况，如在使用过程中有任何问题，我们将在第一时间解决客户问题。

Our salespersons continue to follow up products use conditions, if there are any problems, we will deal with problems as soon as possible.



# Environmental protection

## 安全环保

“可持续的产品研发、生产体系”一直贯穿赛福德整个企业经营思维。我们深知，地球赖以持续的资源正逐年消耗殆尽，按目前人类对资源的依赖程度下去，我们终将无材可用。所以我们在对医疗家具的选材标准上始终坚持“环保、可持续”的择优理念在产品生产体系中，严格执行 ISO 环境要求标准，减少因生产过程中产生的污染排放。

“Sustainable product development and production system” has always been SAFETY Medical’s core management thinking. We are well aware that the continuous resources we rely on are being depleted year by year. According to the current degree of human dependence on resources, We will eventually have nothing to use. Therefore, we have always adhered to the “environmental protection and sustainable” concept to select the best medical furniture. In the system, the ISO environmental requirements and standards are strictly implemented to reduce the pollution emissions generated during the production process.

